



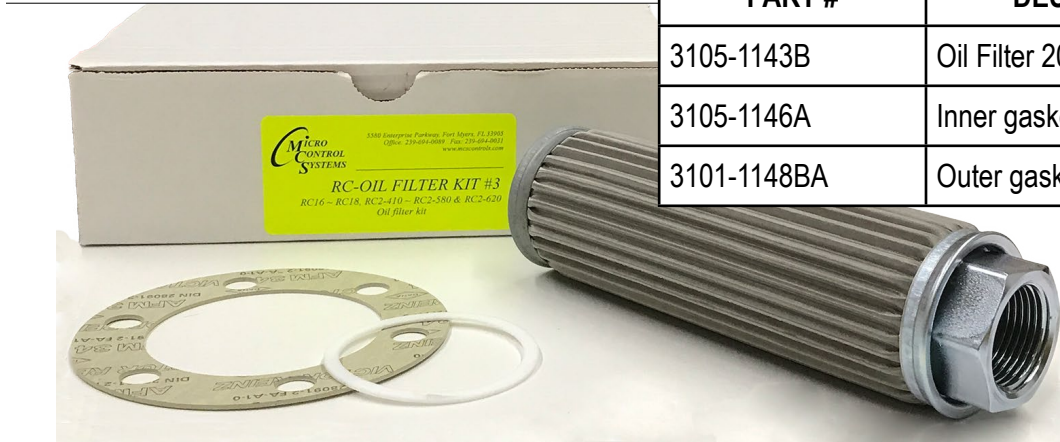
## RC-OIL FILTER KIT#3

Factory recommends that the oil filter cartridge should be checked and cleaned at 24 hours of run time after initial startup. Clean or replaced the filter cartridge every 10,000 hours thereafter.

It is important that the oil filter cartridge is not clogged; it might result in the malfunction of the lubrication systems, bearings and capacity control system.

### RC16 ~ RC18, RC2-410 ~ RC2-580 & RC2-620

PART #	DESCRIPTION	QUANTITY
3105-1143B	Oil Filter 200 mesh	1
3105-1146A	Inner gasket oil filter flange	1
3101-1148BA	Outer gasket oil filter flange	1



**Packaging**  
 Ship Weight ..... 1.65 lb  
 Box Dimensions..... 10" x 7" x 3"

## HOW TO REPLACE OIL FILTER

**Note:** If the compressor is still in service, it must be isolated from the refrigerant and electrical system. Lock out tag in place, service valves and any other refrigerant lines closed.

All refrigerant must be recovered in accordance to EPA guidelines. Nitrogen can be used to increase the internal pressure to aid in the removal of the oil (1or 2 psi).

### Step 1.

Drain and recover lubricant inside the compressor by loosening the nut of angle valve on service flange or oil filter flange. Another way is loosening all bolts of oil filter flange and removing this flange to drain oil.



### Step 2.

After draining lubricant, loosen all bolts of oil filter flange and pull out flange and oil filter.

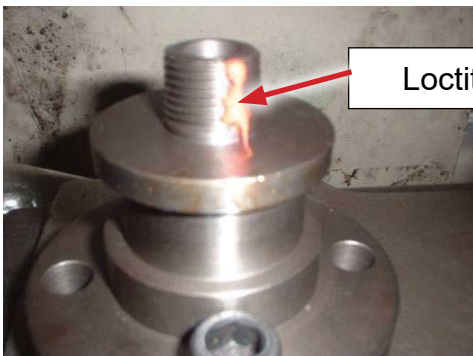
### Step 3.

Remove old filter and place in vise (clamp) to remove from flange, loosen the nut of oil filter with a wrench, and remove from flange.



### Step 4.

Apply Loctite sealant on the screw of oil filter flange. Install new oil filter onto oil filter flange and tighten it using a torque wrench with torque, 62 ft lb(850 kg-cm).



## ASSEMBLE OIL FILTER ON COMPRESSION CASING

### Step 1.

Put oil filter inner (Teflon) and outer gasket on oil filter flange as shown.

### Step 2.

Install oil filter assembly on compressor casing.



### Step 3.

Install all hexagonal screw bolts and tighten it using a hexagonal wrench or a torque wrench with torque, 72 ft lb (1000 kg-cm).

Leak check, pressurize with nitrogen, then vacuum compressor to 200 microns

